



# Sea Ice

Dirk Notz

Max Planck Institut für Meteorologie



# Overview

- 1 How not to combine observations with models
- 2 Questions arising from CCI sea ice

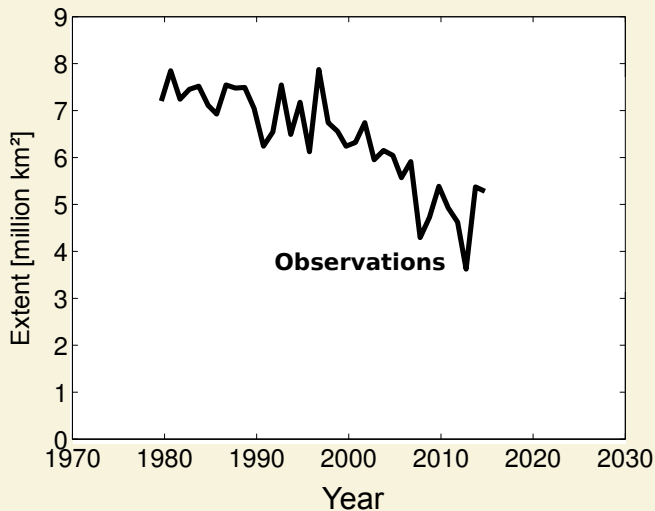


# Overview

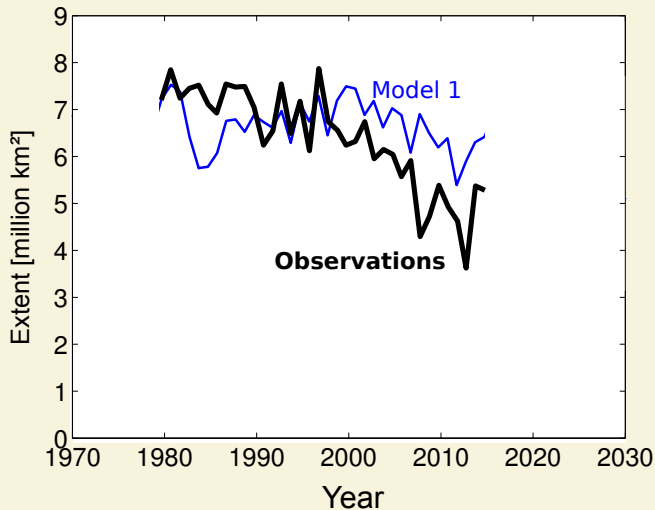
- 1** How not to combine observations with models
- 2** Questions arising from CCI sea ice



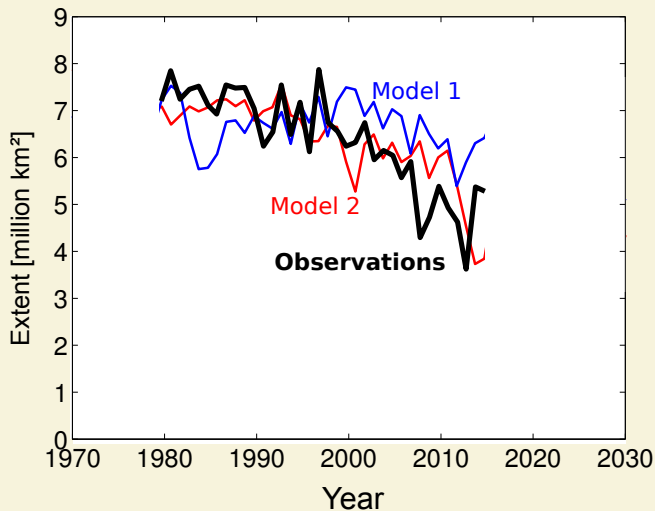
# September Arctic sea-ice extent



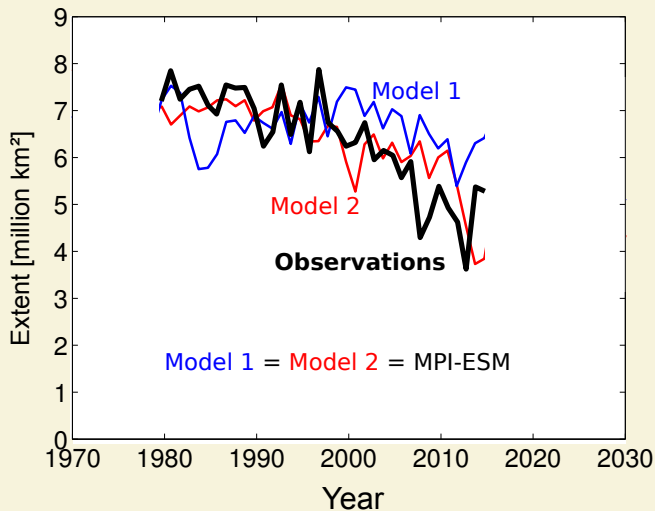
# September Arctic sea-ice extent



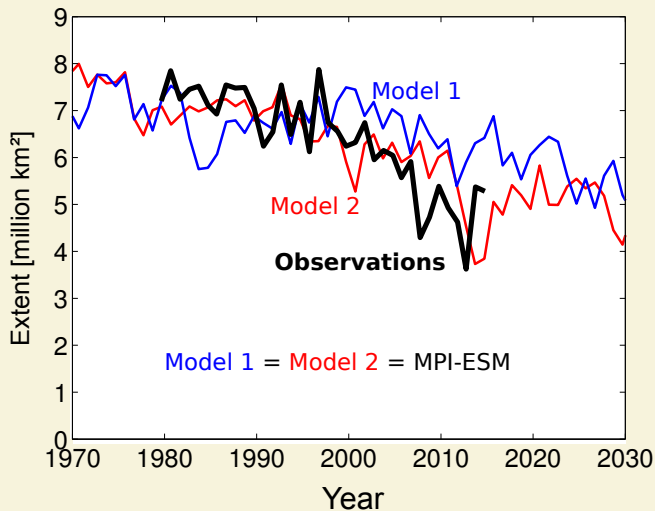
# September Arctic sea-ice extent



# September Arctic sea-ice extent



# September Arctic sea-ice extent





# “CMIP5 models underestimate sea-ice retreat”

Reality

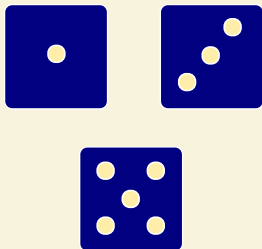


# “CMIP5 models underestimate sea-ice retreat”

Reality



Model 1

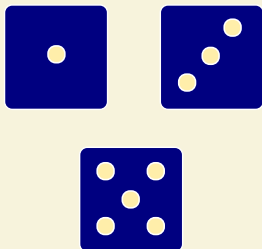


# “CMIP5 models underestimate sea-ice retreat”

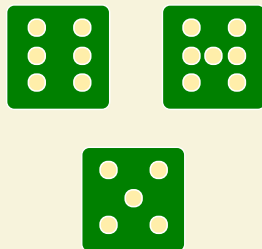
Reality



Model 1



Model 2

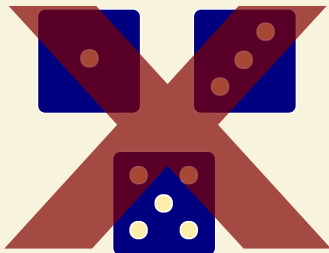


# “CMIP5 models underestimate sea-ice retreat”

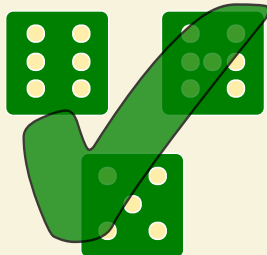
Reality



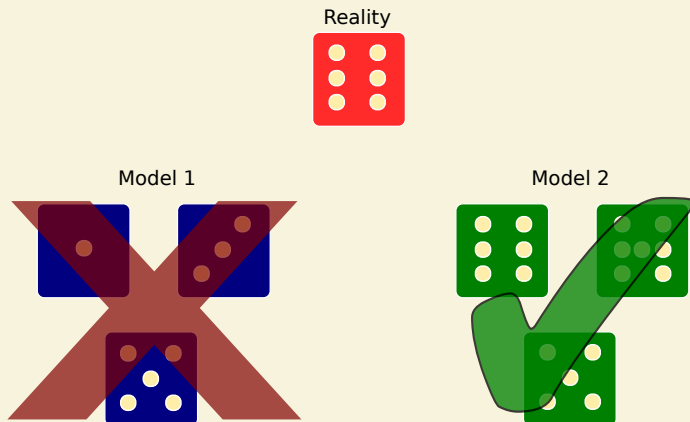
Model 1



Model 2

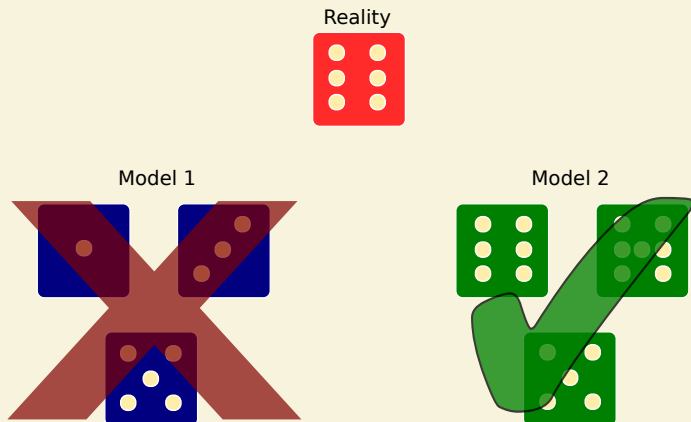


# “CMIP5 models underestimate sea-ice retreat”



Model-evaluation tools produce pretty pictures...

# “CMIP5 models underestimate sea-ice retreat”

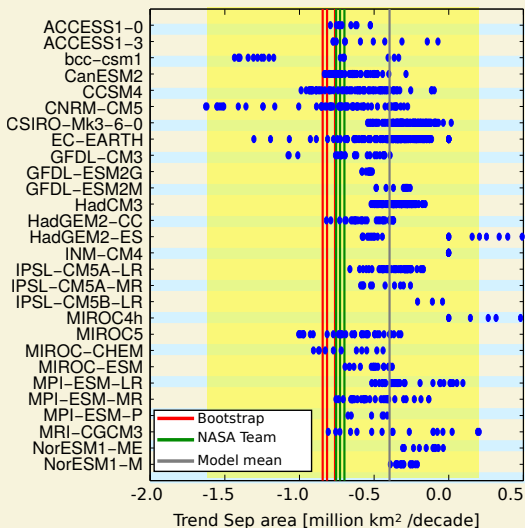


Model-evaluation tools produce pretty pictures...

... but not necessarily insights.

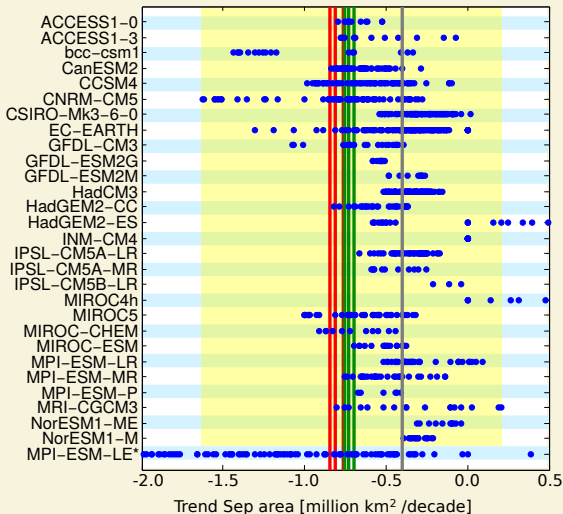
# Internal variability in CMIP5

## Arctic sea ice: 30 year trends, synthetically increased ensemble



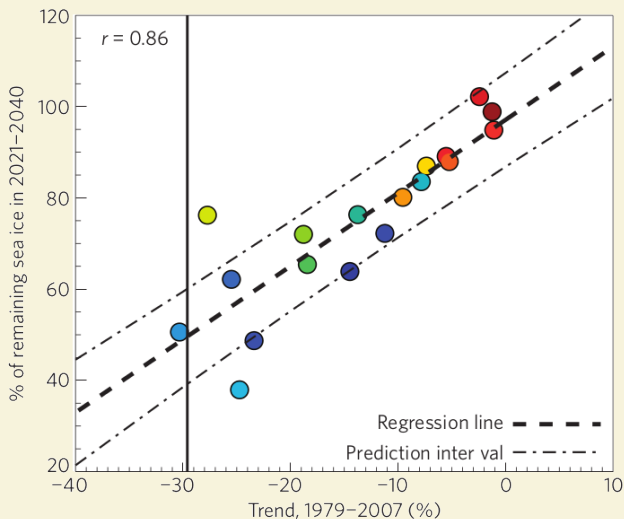
# Internal variability in CMIP5

Arctic sea ice: 30 year trends, synthetically increased ensemble





# Model convergence is not necessarily desirable



## Some (maybe sobering?) facts. . .

On model validation (*Oreskes, Science, 1994*)

“The validation and verification of models of natural systems is impossible.”



## Some (maybe sobering?) facts. . .

### On model validation (*Oreskes, Science, 1994*)

“The validation and verification of models of natural systems is impossible.”

### On model falsification (*Parker, Aristotelian Society Supp. Vol., 2009*)

“Climate Models are false [. . .] and not even approximately true. One can only examine the usefulness of a climate model for a particular purpose.”



## Some (maybe sobering?) facts. . .

### On model validation (*Oreskes, Science, 1994*)

“The validation and verification of models of natural systems is impossible.”

### On model falsification (*Parker, Aristotelian Society Supp. Vol., 2009*)

“Climate Models are false [. . .] and not even approximately true. One can only examine the usefulness of a climate model for a particular purpose.”

### On model usefulness (*Notz, Proc. R. Soc. A, accepted*)

“The usefulness of a climate model cannot be derived solely based on its degree of agreement with observational data.”

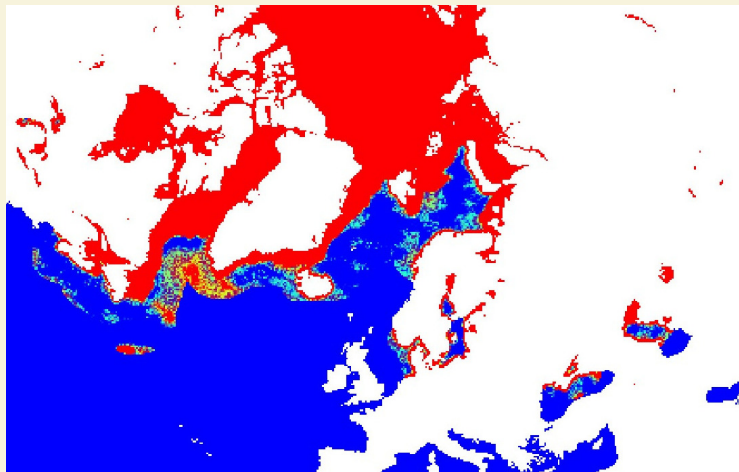


# Overview

- 1 How not to combine observations with models
- 2 Questions arising from CCI sea ice**

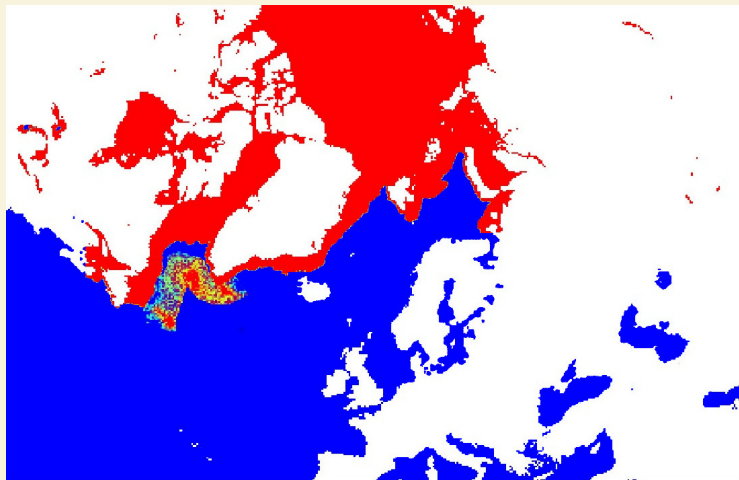


# Observational data I



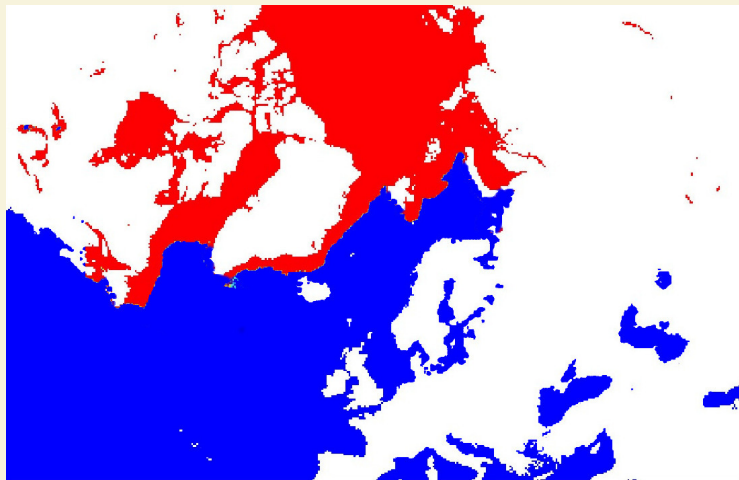
Doesn't look like real sea ice, isn't real sea ice

# Reality



Let's assume this is reality

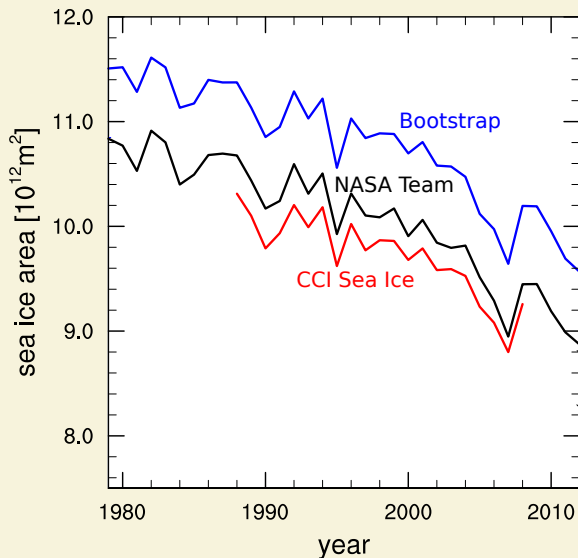
## Observational data II



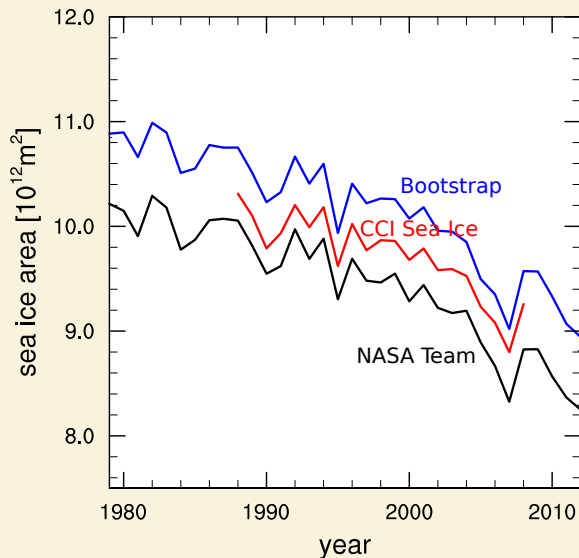
Does look like real sea ice, isn't real sea ice



# Annual mean I

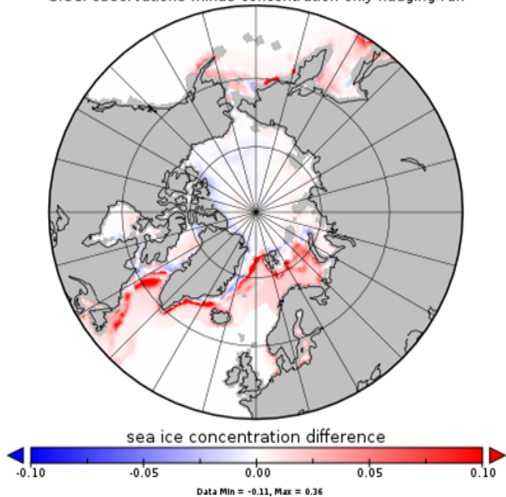


# Annual mean II



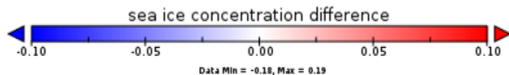
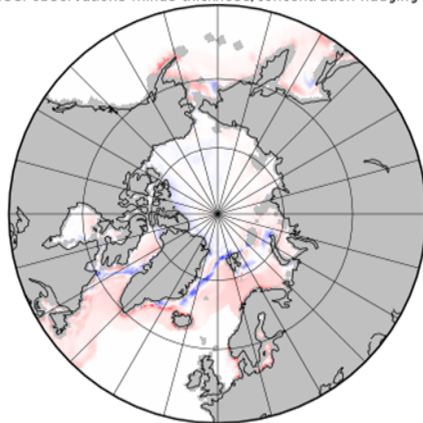
# Consistency with model physics

Sea ice concentration difference, 2003-2008, MAR mean  
SICCI observations minus concentration-only nudging run

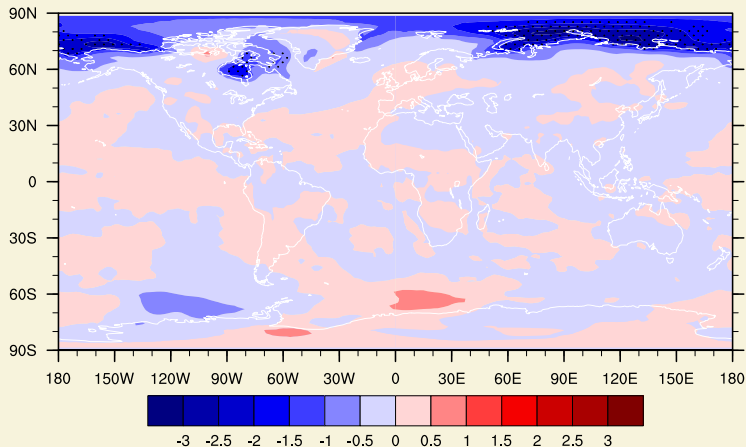


# Note: any model will eventually surrender to data

Sea ice concentration difference, 2003-2008, MAR mean  
SICCI observations minus thickness/concentration nudging run

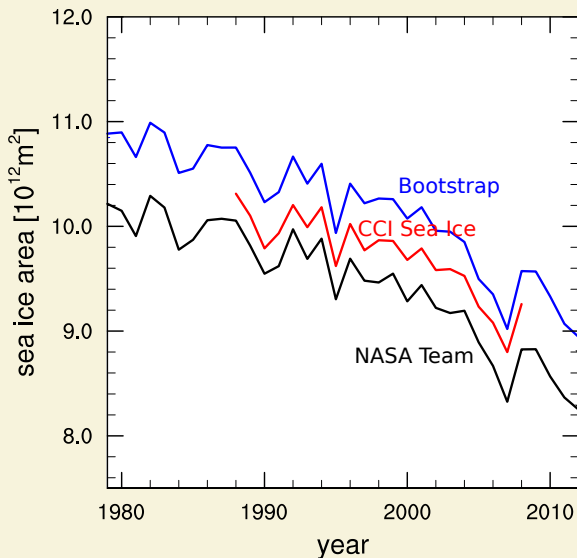


# Impact of model initialisation



Temperature difference in September after initialisation in May  
(Bootstrap - NASA Team)

You will never (?) see this much CCI-SI data again...



# Summary

- Models are not developed to agree with observations, but to answer questions



# Summary

- Models are not developed to agree with observations, but to answer questions
- Sometimes, observations can assist the models in answering questions (and vice versa)





# Summary

- Models are not developed to agree with observations, but to answer questions
- Sometimes, observations can assist the models in answering questions (and vice versa)
- How much independent thinking can we expect of users of our data?



# Summary

- Models are not developed to agree with observations, but to answer questions
- Sometimes, observations can assist the models in answering questions (and vice versa)
- How much independent thinking can we expect of users of our data?
- How useful will be a timeseries of sea-ice concentration starting in 2002 if other time series start in 1978?

