

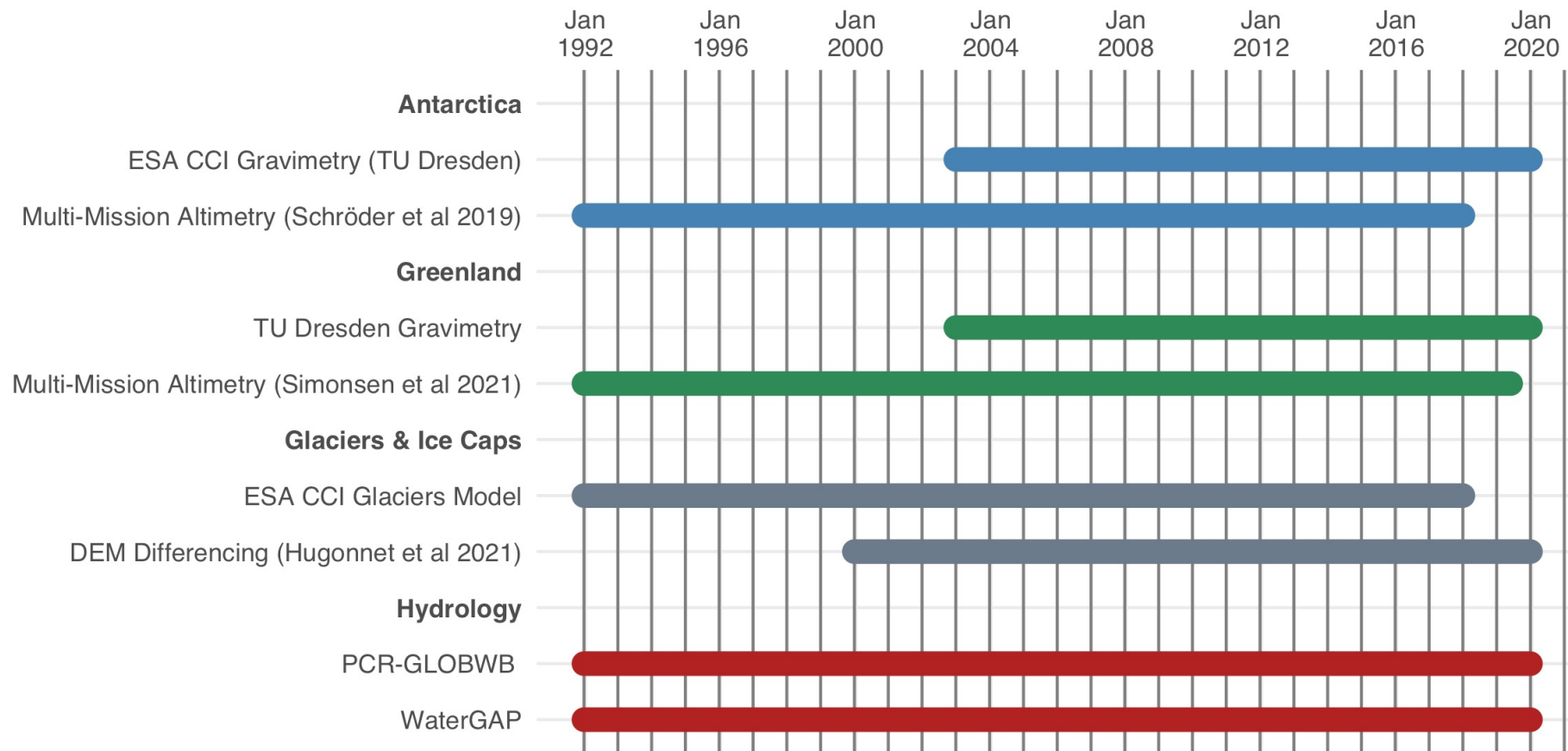
Fingerprinting Approach to Close Regional Sea Level Budgets using ESA-CCI (FACTORS)

Dr Stephen Chuter (s.chuter@bristol.ac.uk)

University of Bristol, UK

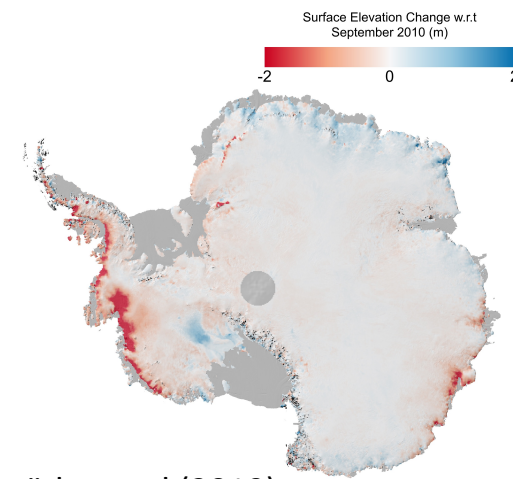
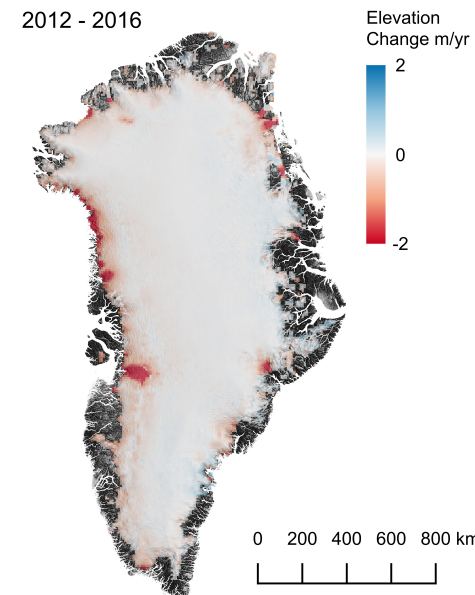


Observations



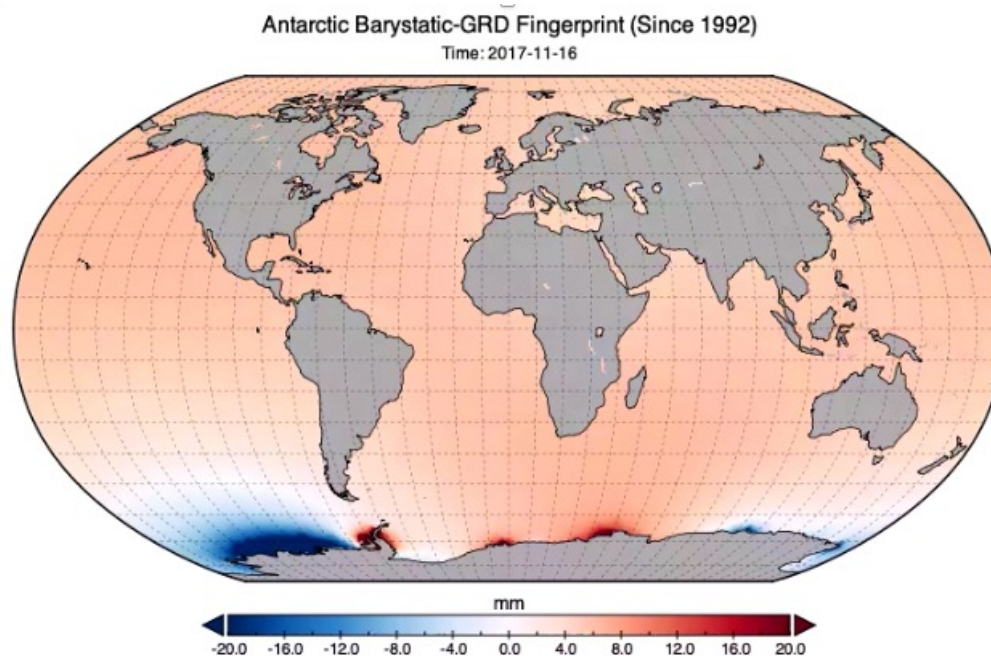
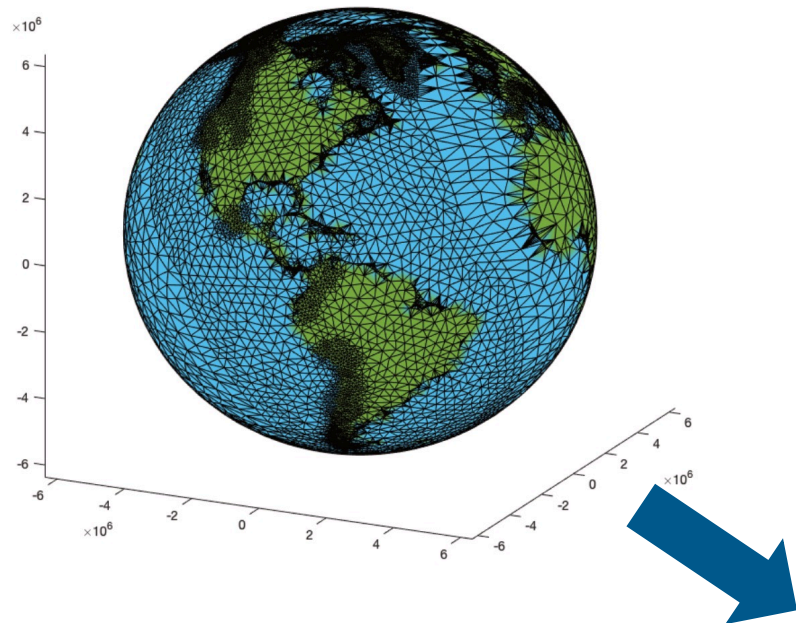
ESA Greenland CCI

2012 - 2016



Schröder et al (2019)

Sea Level Fingerprints



Sea Level Equation Solver

Regionally Optimised Mesh

Global 3D Spherical Mesh Construction

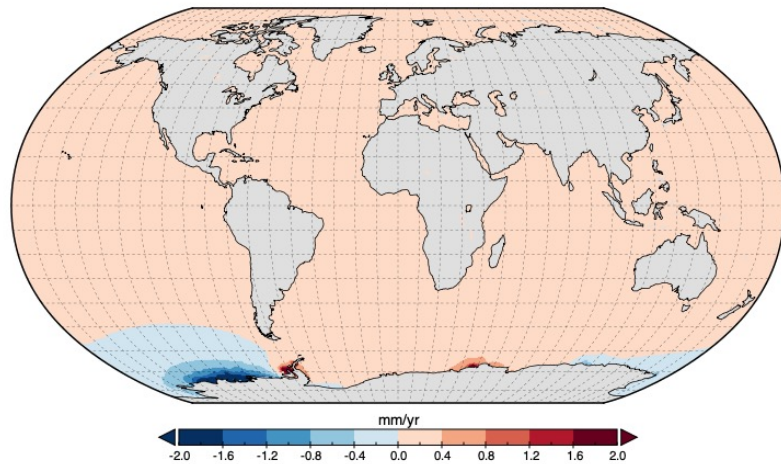
SLF Computation with Ensemble Mass Loading

Ice + Hydrology SLF's, including geoid and VLM components

Regional Sea Level Budget Closure

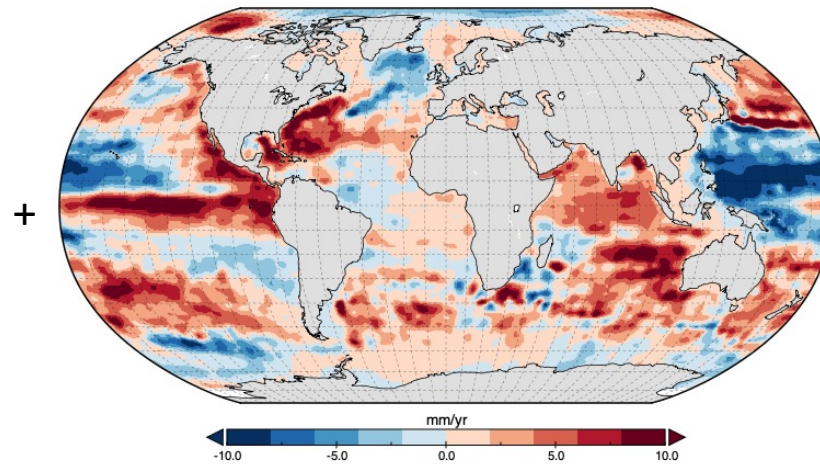
Ocean Mass (Fingerprint)

Antarctic Barystatic-GRD Fingerprint



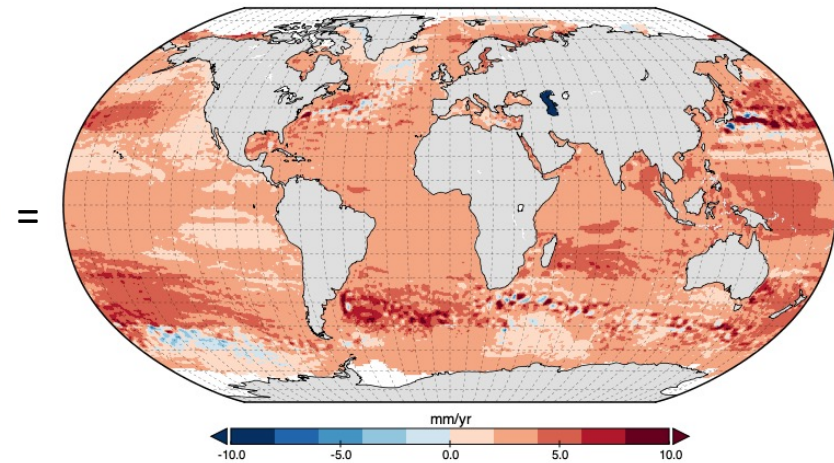
Steric SLR

2005 - 2015 Steric Trend (4 Argo Product Ensemble Mean)



Altimetry SSHA

1993 - 2019 Multimission Sea Level Trend



Antarctic altimetry fingerprint
1992-2017 mean trend
(Schröder et al 2018)

ESA CCI Sea Level Altimetry
+
Arctic & Antarctic Product