



# Ozone\_cci

## Overview of results and Data products

M. Van Roozendael and M. Dameris  
on behalf of the Ozone\_cci team

*CCI CMUG Integration Meeting #3  
MPI-M, Hamburg, 3-5 June 2013*

# The Ozone\_cci team



**16 institutes from 10 ESA member state countries**

## 3 EO Science Teams

Total ozone



Nadir profiles



Limb /occultation profiles



Validation Team (VALT)



Climate Research Team (CRG)



System Eng. Team (SET)



# EO sensors



Agency	Satellite	Sensor	Time period *
ESA	ESR-2	GOME	1995 – 2011
ESA	ENVISAT	SCIAMACHY	2002 – 2012
ESA	ENVISAT	GOMOS	2002 – 2012
ESA	ENVISAT	MIPAS	2002 – 2012
EUMETSAT	METOP	GOME-2	2007 – 2012
NASA	AURA	OMI	2004 – 2012
SNSB CSA	ODIN	OSIRIS	2001 – 2012
SNSB CSA	ODIN	SMR	2001 – 2012
CSA	SCISAT	ACE-FTS	2004 – 2012

\* Maximum time period available; ozone\_cci products generally use subsets of EO data (see details on slide 2). All time-series will be extended in Phase-2.

# Main achievements (1)



## Total ozone

- ❖ Direct-fitting algorithm adapted to GOME, SCIAMACHY and GOME-2 sensors
- ❖ Level-2 full reprocessing of all 3 sensors (1996-2012)
- ❖ Level-3 GTO-ECV v2 (1996-2011)

## Nadir ozone profiles

- ❖ Round-Robin selection of algorithm baseline for CCI Phase-1 (RAL algorithm optimised for the troposphere)
- ❖ Level-2, 3 & 4 demonstration data sets generated for GOME (1997) and GOME-2 (2007-2008)

# Main achievements (2)



## Limb ozone profiles

- ❖ MIPAS round-robin → selection of CCI baseline algorithm
- ❖ Data and error characterization for all ENVISAT + ESA TPM (ODIN, ACE-FTS) limb sensors
- ❖ HARMOZ data set → harmonised single instrument level-2 data set, reported on common pressure/altitude grid
- ❖ Bias and drift tables for all couple of sensors
- ❖ Multiple level-3 data sets:
  - Single instrument monthly zonal mean data sets
  - Merged monthly zonal mean data set (2007-2008)
  - Merged semi-monthly global data set (2007-2008)
  - Fine-resolution gridded data sets from all sensors (2007-2008)

# Ozone\_cci CRDP (TC)



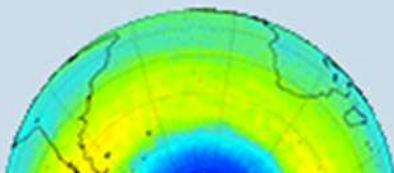
## Ozone



## Navigation

- ▶ About OZONE CCI
- ▶ Project Plan
- ▶ Project Content
- ▶ Support
- **CRDP**
- Private Area

Total Ozone Columns (DU)  
2006



Home

## Climate Research Data Package (CRDP)

Submitted by adminbisa on Mon, 2013-03-11 11:24

The Ozone\_cci Climate Research Data Package (CRDP) contains all the data the project. The data base is hosted on a freely accessible ftp site and is on products: Total ozone products (TC=Total Column), Nadir ozone profile products (LP=Limb Profile) products.

The Ozone\_cci data products are listed in the table below. All data sets are compliant with CCI rules.

No password is required to access the data in reading mode. To access the corresponding product ID and immediately after on the 'OK' box.

Or direct access to the ftp: [ftp://cci\\_web@ftp-ae.oma.be/esacci/ozone](ftp://cci_web@ftp-ae.oma.be/esacci/ozone). No

	Product	Sensor	Product description
	TC_L2_GOME	ERS-2 GOME	Harmonized GODFIT multi-sensor prototype level 2 data product

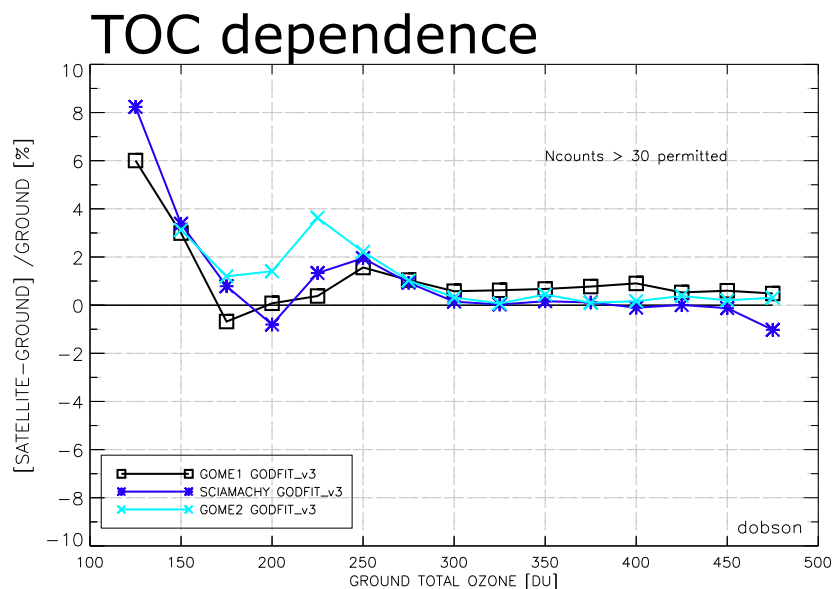
Latitude (°)

# Ozone\_cci CRDP (TC)

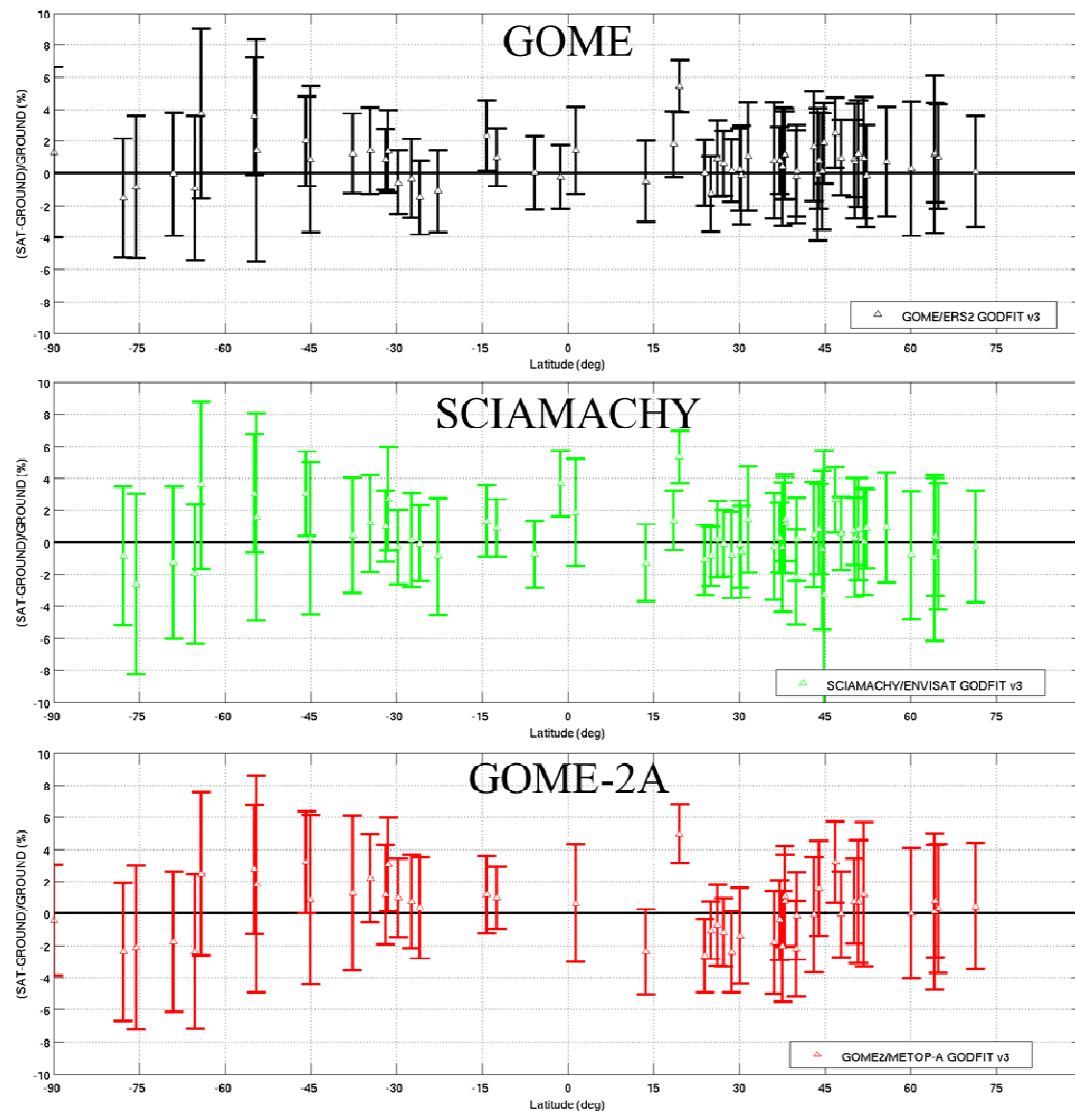


## Validation

- ❖ WOUDC Dobson and Brewer networks
- ❖ WMO/GAW NDACC
- ❖ SAOZ network



## CCI Level-2 against Dobson network



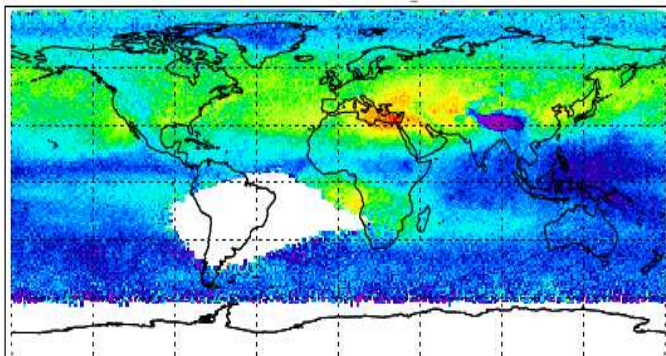
# Ozone\_cci CRDP (NP)



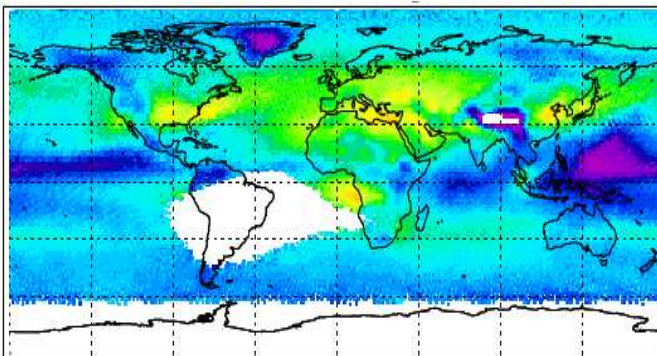
## Nadir Ozone Profiles

Level-2	Demonstration CCI algorithm, with profiles on fixed pressure levels common to limb products	GOME (1997) GOME-2 (2007-2008)
Level-3	Monthly mean gridded data	GOME (1997) GOME-2 (2007-2008)
Level-4	Assimilated ozone profiles on 6 hourly global fields	GOME (1997) GOME-2 (2007-2008)

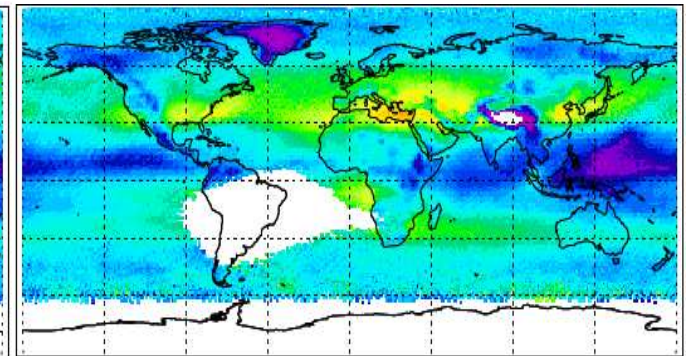
GOME2



TOMCAT



TOMCAT (GOME2 AKs)





# Ozone\_cci CRDP (LP)



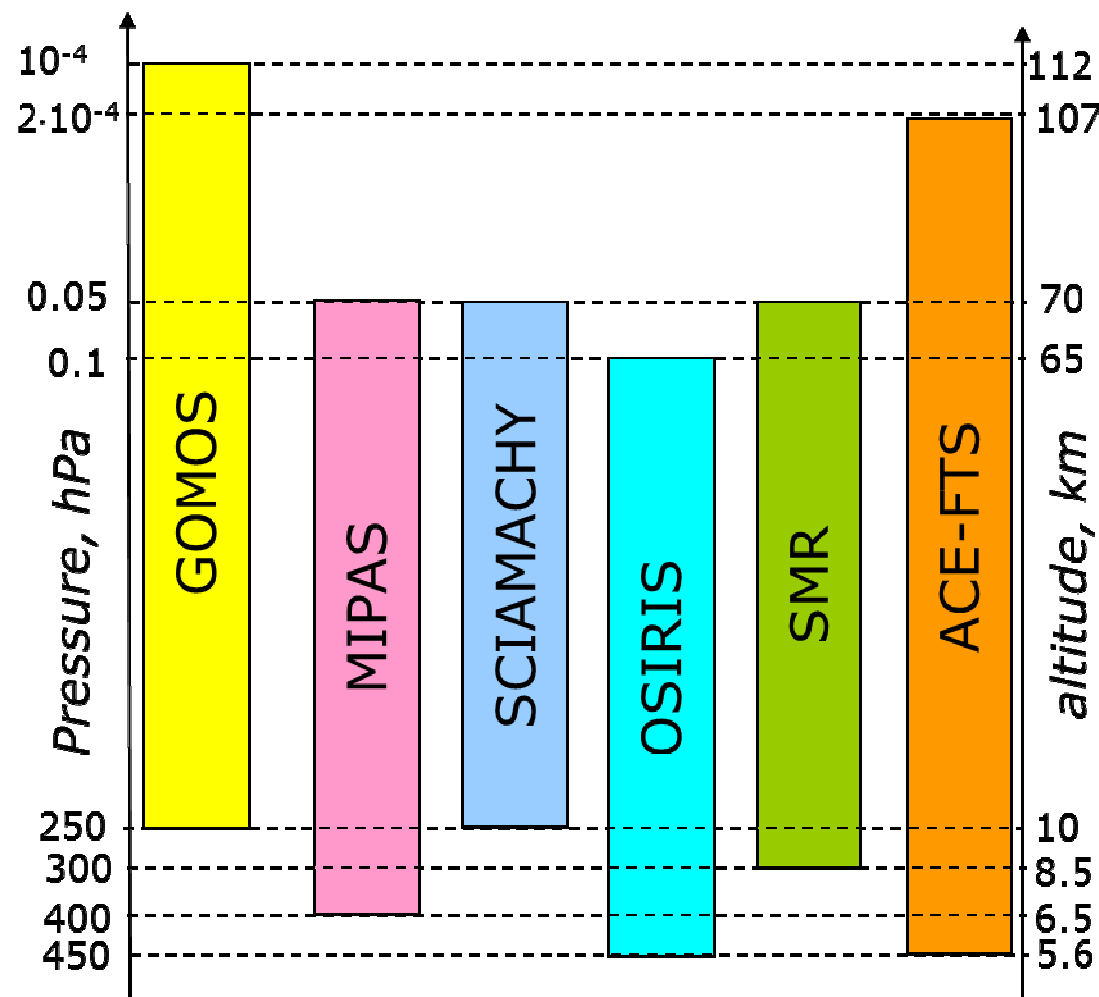
## Limb Ozone Profiles

Level-2	Harmonized Single Instrument (HARMOZ): individual profiles with a common pressure grid and concentration unit	SCIAMACHY, GOMOS, MIPAS, OSIRIS, SMR, ACE (all lifetime)
Level-3	Single Instrument Monthly Mean Zonal Mean	SCIAMACHY, GOMOS, MIPAS, OSIRIS, SMR, ACE (all lifetime)
	Merged Monthly Zonal Mean	SCIAMACHY, GOMOS, MIPAS, OSIRIS, SMR, ACE (2007-2008 demonstration)
	Merged Semi-Monthly data set (20° longitude, 10° latitude)	SCIAMACHY, GOMOS, MIPAS, OSIRIS, SMR, ACE (2007-2008 demonstration)
	Single Instrument Fine-Resolution gridded data set (5°x5°, 3 day time step)	SCIAMACHY, GOMOS, MIPAS, OSIRIS, SMR (2007-2008 demonstration)

# HARMOZ: vertical grid and altitude range



- **Extended SPARC-DI grid**
- **All CCMVal levels are included**
- **Vertical spacing**
  - ~ 1 km below 20 km
  - ~2-3 km above 20 km
- **Altitude range is instrument-dependent**
- **Altitude profiles are also provided**



# Bias tables



- For each pair of instruments
- For each month
- 2 types of collocation criteria
  - Standard:  $|\Delta t| \leq 24 \text{ h}$   $|\Delta d| \leq 1000 \text{ km}$   $|\Delta lat| \leq 2^\circ$
  - Tight (for pairs including MIPAS and SCIAMACHY)  
 $|\Delta t| \leq 4 \text{ h}$   $|\Delta d| \leq 400 \text{ km}$   $|\Delta lat| \leq 2^\circ$

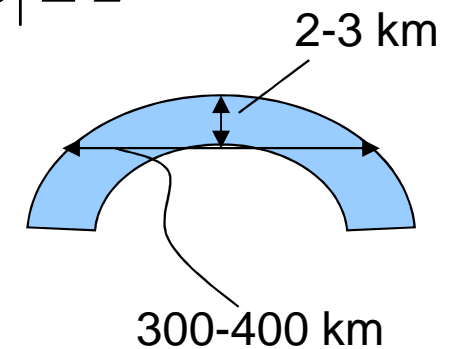
- Parameters

- Bias  $b = 2 \frac{\langle x_1 - x_2 \rangle}{\langle x_1 \rangle + \langle x_2 \rangle}$

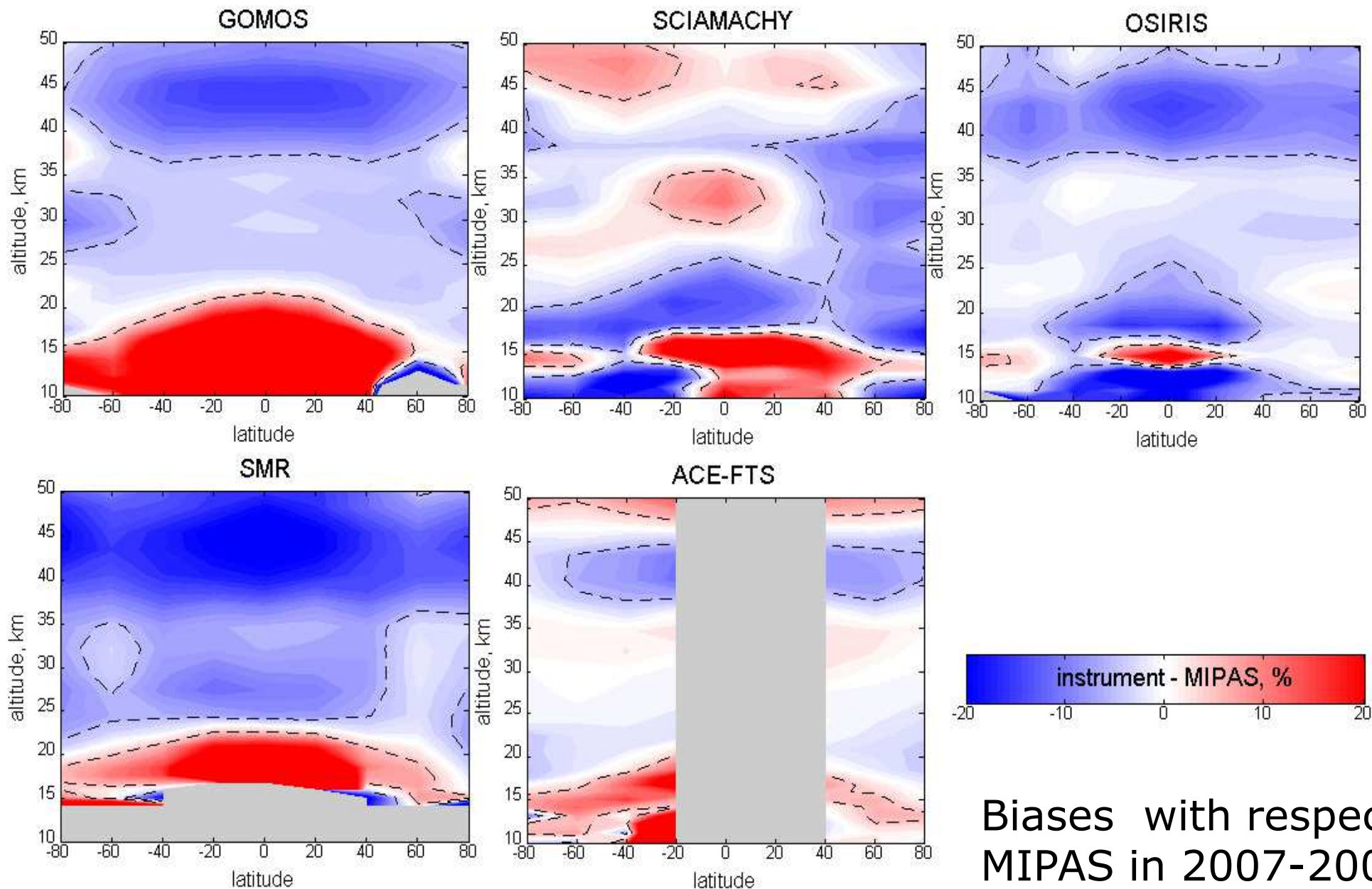
- Uncertainty of bias  $\sigma_b = \frac{\sigma}{\sqrt{N}}$

- Estimates based on mean/rms and median/inter-percentile range are provided

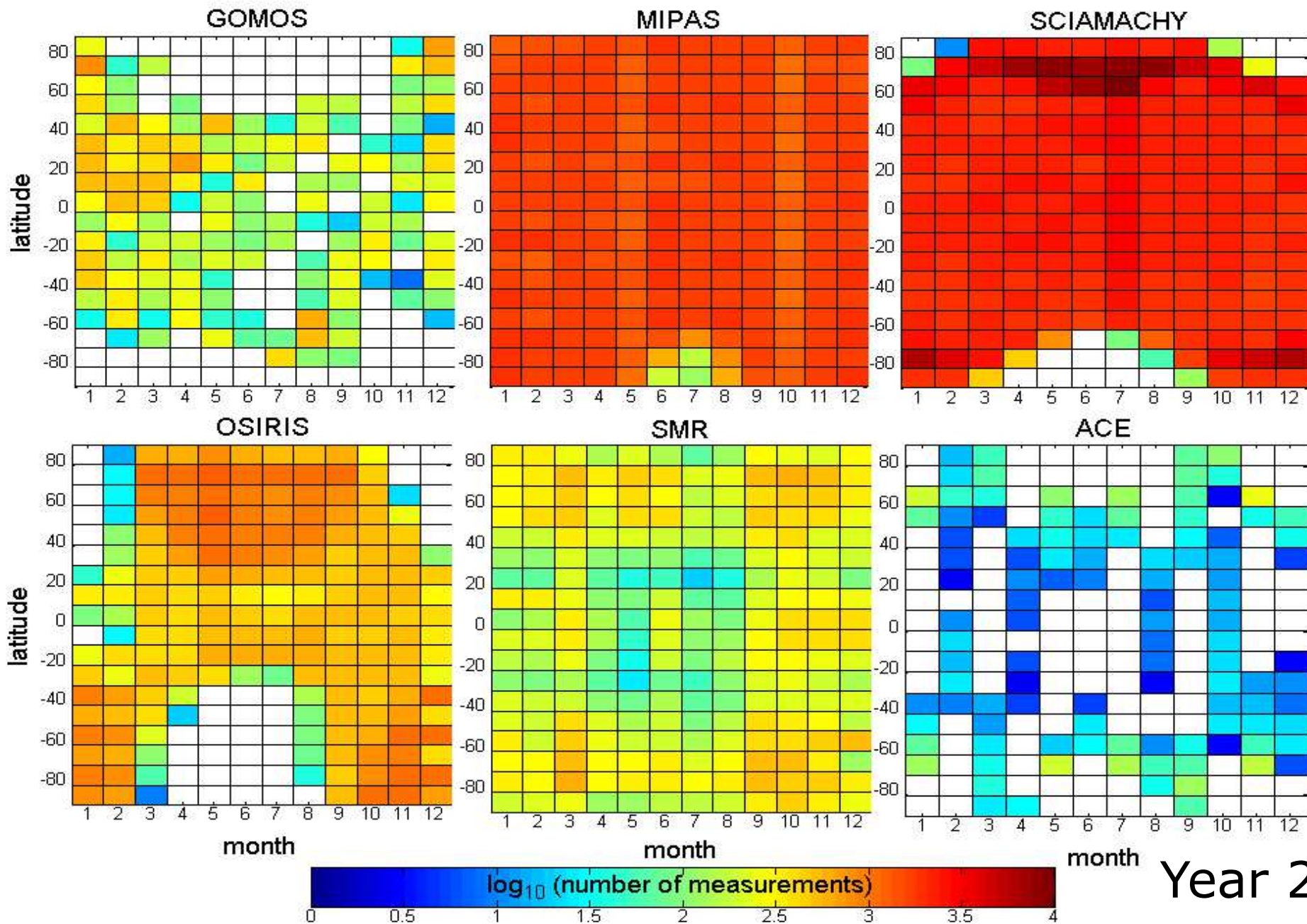
- Format: netcdf



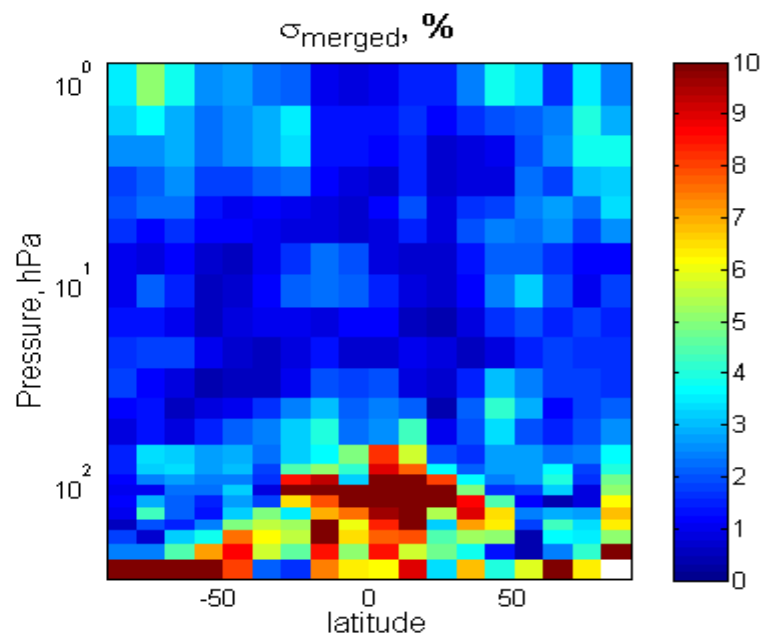
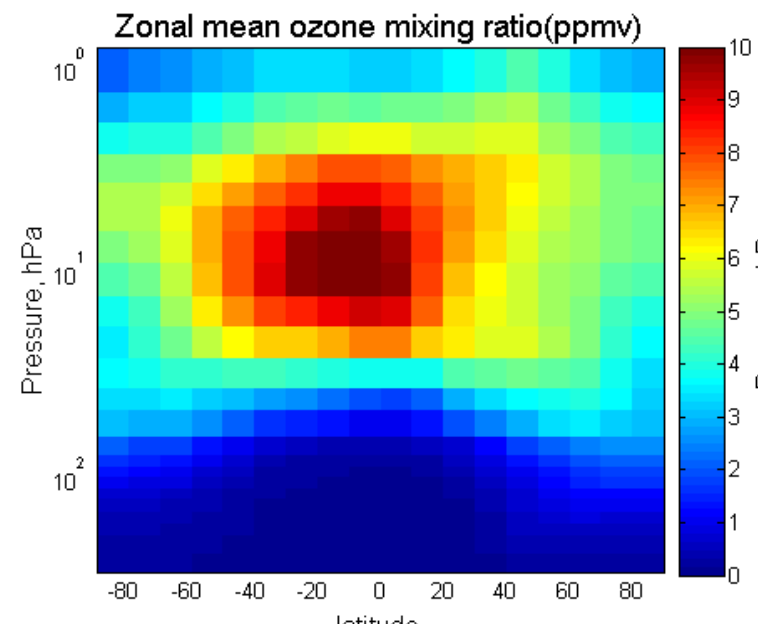
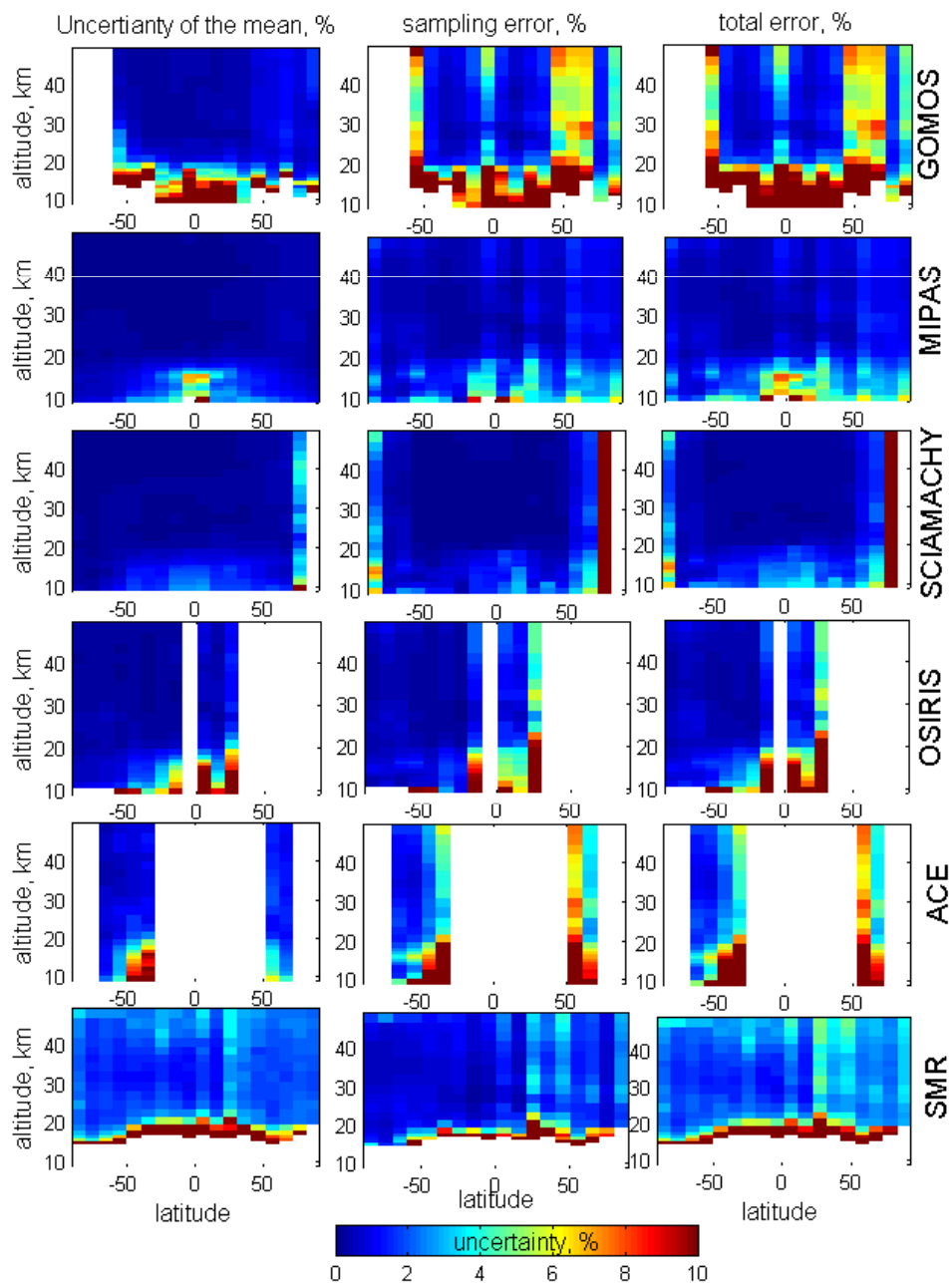
# A higher level analyses of data consistency using the bias tables



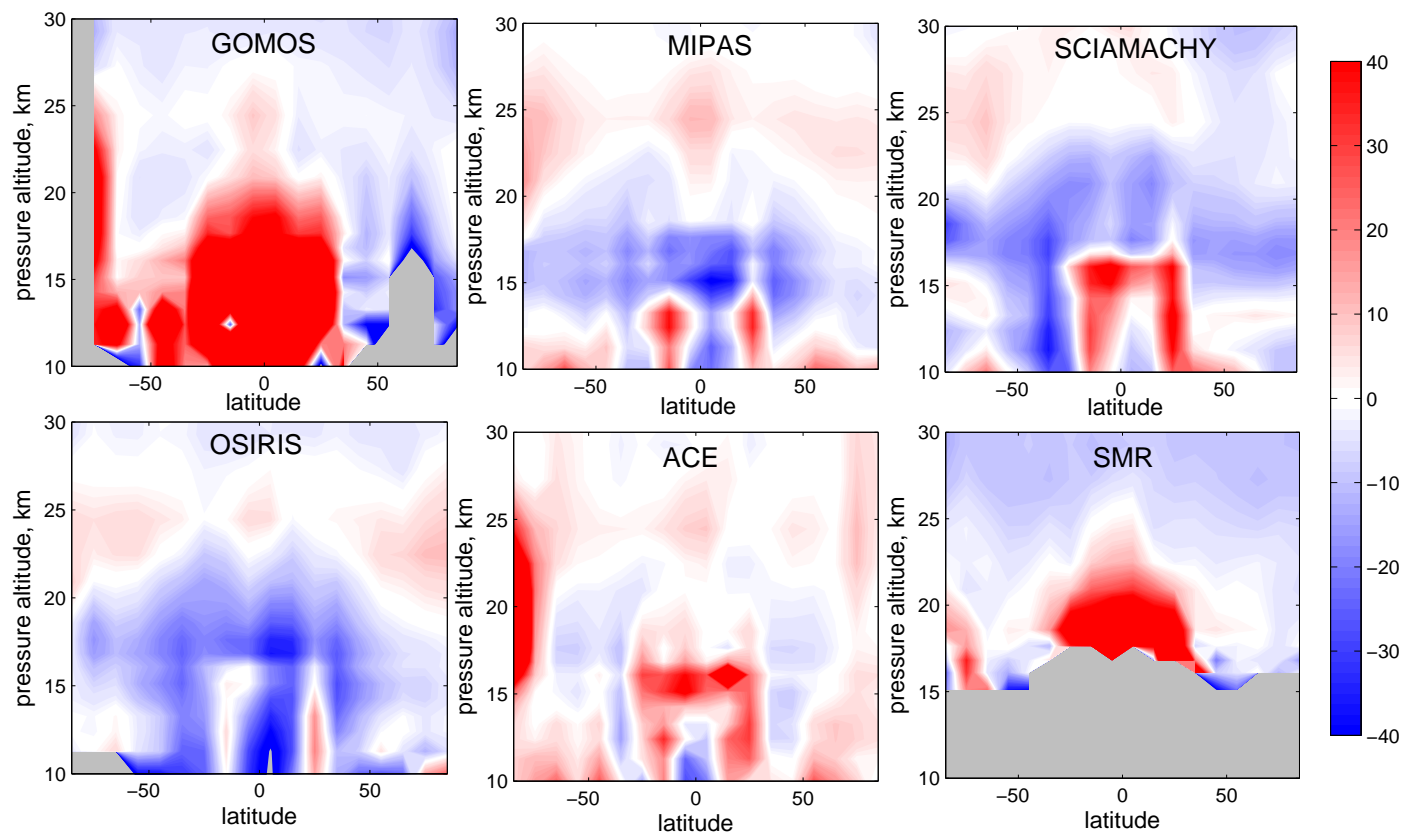
# Coverage by the limb datasets



# Merged monthly mean data set

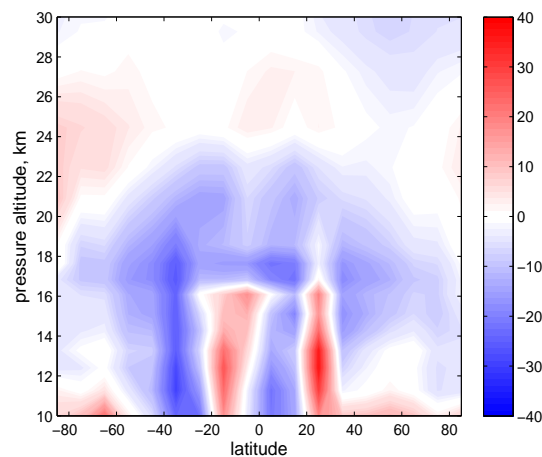


# Preliminary evaluation (UTLS)



Mean deviations  
from McPeters-  
Labow  
climatology  
(expressed in %)  
for year 2008

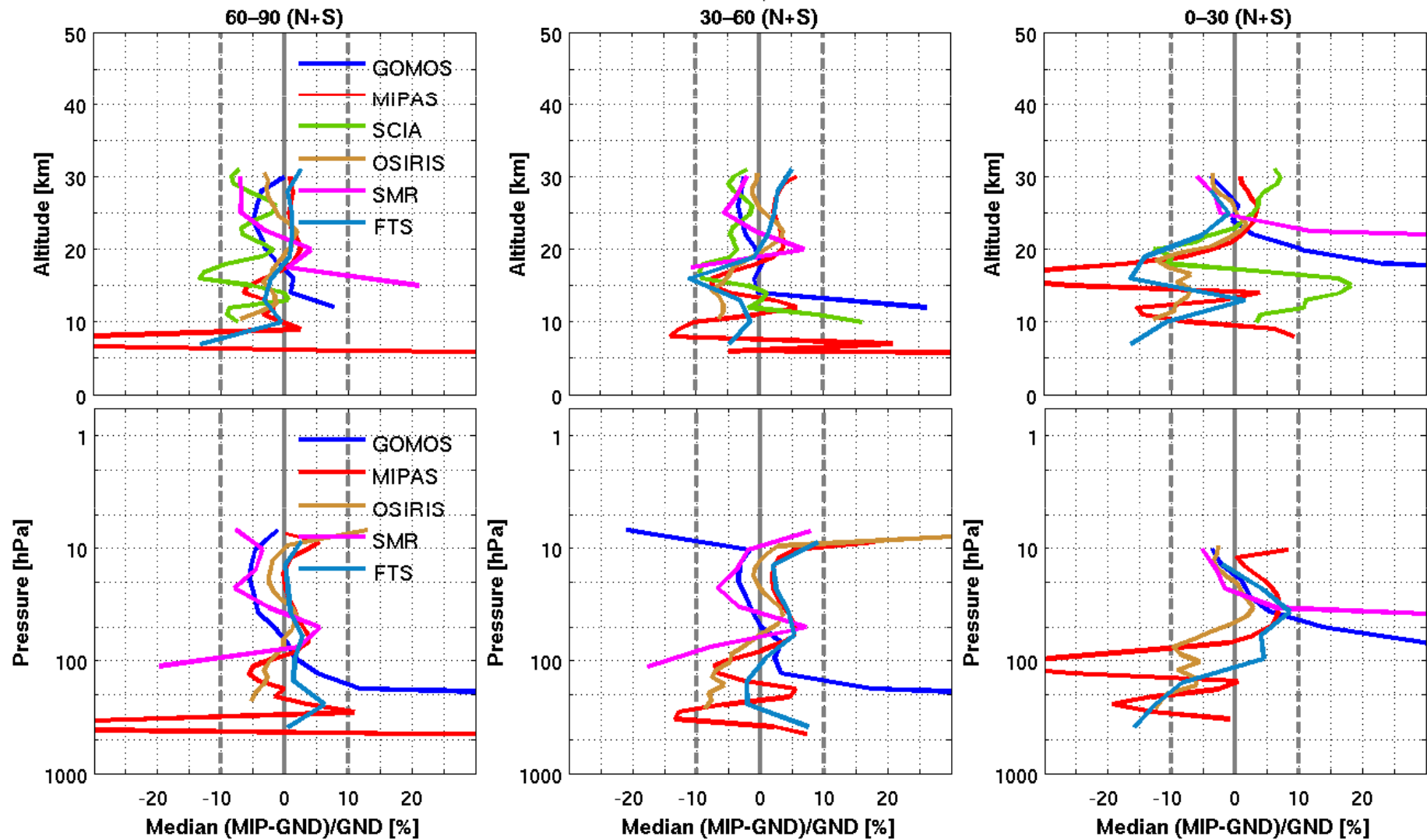
merged



# Ground-based validation



## Comparison to NDACC-WOUDC sondes (Median bias)





# Next step – CRG assessment



- Chemistry-Climate Model (CCM) simulations for evaluation purposes, in particular with ‘ozone\_cci’ data products.
- CCMs: **UMUKCA** (UCAM), **EMAC** (DLR) and **TM5** (KNMI), in a “nudged set-up”, i.e., relaxing the modelled dynamics towards observations (ERA-Interim):
  - Strong link to SPARC CCM1 (REF-C1SD simulation).
  - Processing of model data for the ‘golden year’ 2008.
  - First check with CCI precursor IASI (Infrared Atmospheric Sounding Interferometer).

# Conclusion



- Ozone\_cci CRDP is ready (for most data sets)
- New total ozone, nadir profiles and limb L2 & L3 data sets have been produced and characterized
- Major effort in data harmonisation for all types of ozone products but time-series are still limited
- Data sets are freely downloadable from the Ozone\_cci web site
- Validation is ongoing
- CRG assessment is starting/ongoing

[www.esa-ozone-cci.org](http://www.esa-ozone-cci.org)